

PRESTIGE R1

DTF Printer

INTRODUCTION

Prestige R1 is the first original manufactured for DTF entry level users ,with the maximum printing width as 33cm(13") and printing speed as 1.2 m² / hour at 8 pass, it can easily allow you to manage to print 4-5 shirts/hour.

Industrial level of developing but keep for entry level's cost! Get ready for your DTF journey now by having Prestige R1 from DTF STATION.

FEATURES

1.2m²/hour at 8pass!

White Ink Management System(WIMS):

timed white ink stirring system to circulate and maintain white ink inside printer

Auto-cleaning System

Auto Ink Alarming System

Compact Size and Light Weight

Offered with DigiRIP RIP Software



BENEFITS

DTF Station Tech Support: here to help with full after-purchase support

Perfect for Entry level DTF Printing

Compact yet powerful

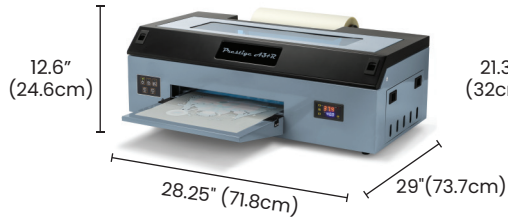
Intuitive, elegant design for easy set up

SPECIFICATIONS

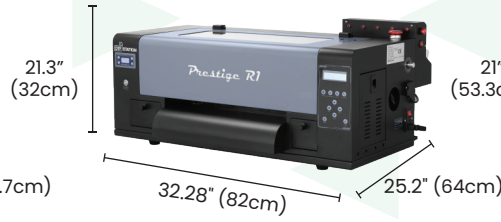
Printing Width	13" (33cm)
Printing Speed	8 PASS 12.9sq.ft/h (1.2 m ² /h)
Printer Head	Epson F1080 (1)
Software	DigiRIP RIP Software + Hoson
Printer Dimensions	32.28"W x 25.2"D x 12.6"H 82cm x 64cm x 32cm

Packaging Weight	88 lbs(40kg)
Machine Weight	82 lbs(37kg)
Packing Dimensions	35.43"W x 23"D x 21.3"H 90cm x 58.5cm x 54.1cm
Daily Output	30 pcs
Power Requirements	700W / 110V / 6.36A 700W / 220V / 3.18A

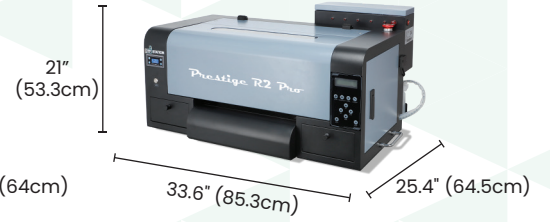
COMPARISON



Prestige A3+R



Prestige R1



Prestige R2 Pro

Print Head	EPSON 1390	EPSON F1080	Dual Epson i1600
Mainboard	Epson Original (Converted)	Hoson	Hoson
Max Print Width	11.8" (30 cm)	13" (33 cm)	13" (33 cm)
Printing Speed	1440 x 720 DPI 6sq. ft./h (0.56m ² /h)	8 PASS 12.9sq.ft/h (1.2 m ² /h)	700*1200DPI (10pass) 26.9-32.3sq.ft/h (2.5-3m ² /h) 720*1800DPI (12pass) 16.1-21.5sq.ft/h (1.5-2m ² /h)
Daily Output	30 pcs	30 pcs	180 pcs

R1 BUNDLE



Prestige R1

Powder Shaker



Miro 13

Heat Press Machine



Prisma Auto



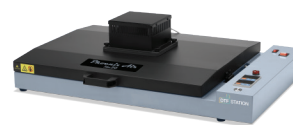
Prisma Swing



Prisma Palette



Seismo S20



Phoenix Air 4050